

HAPPY ME

40.24m (132') Benetti 2020



BUILDER

Benetti

YEAR

2020

LOA

40.24m (132')

BEAM

8.18m (26'10")

DRAFT

2.23m (7'4")

GROSS TONNAGE

346

GUESTS

11 guests in 5 cabins

CRUISING SPEED

11 knots

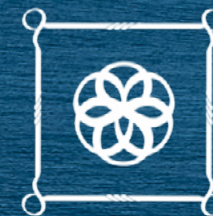
MAX SPEED

15 knots

ZERO SPEED STABILISERS

Yes

HAPPY ME



HAPPY ME is the latest and greatest of the innovative Benetti Classic Supreme 132 range of yachts. Built by an owner who has an incredible eye for detail, a wish to have the finest equipment onboard and an extensive array of guest facilities and entertainment systems, HAPPY ME is a superstar charter yacht.

Sundeck. Her large sundeck is the perfect place to relax, featuring bar stools forward for watching the world go by, a central dining table for 10, crafted of teak and marble, 4 exercise machines (treadmills and bikes), a large sofa and plenty of sunbeds aft. The central section has a fully retracting roof, sliding glass doors and ceiling heaters, offering the greatest possible flexibility and comfort in all weather and wind conditions. There is also a BBQ and a pop-up television. Both the forward and aft sections have removable bimini covers for shade as required. One of the many special features of HAPPY ME is the foredeck sunbathing area, with a 6-person Jacuzzi, 2 tables which can be raised and lowered, sunpads with moveable headrests and a retractable bimini for shade.

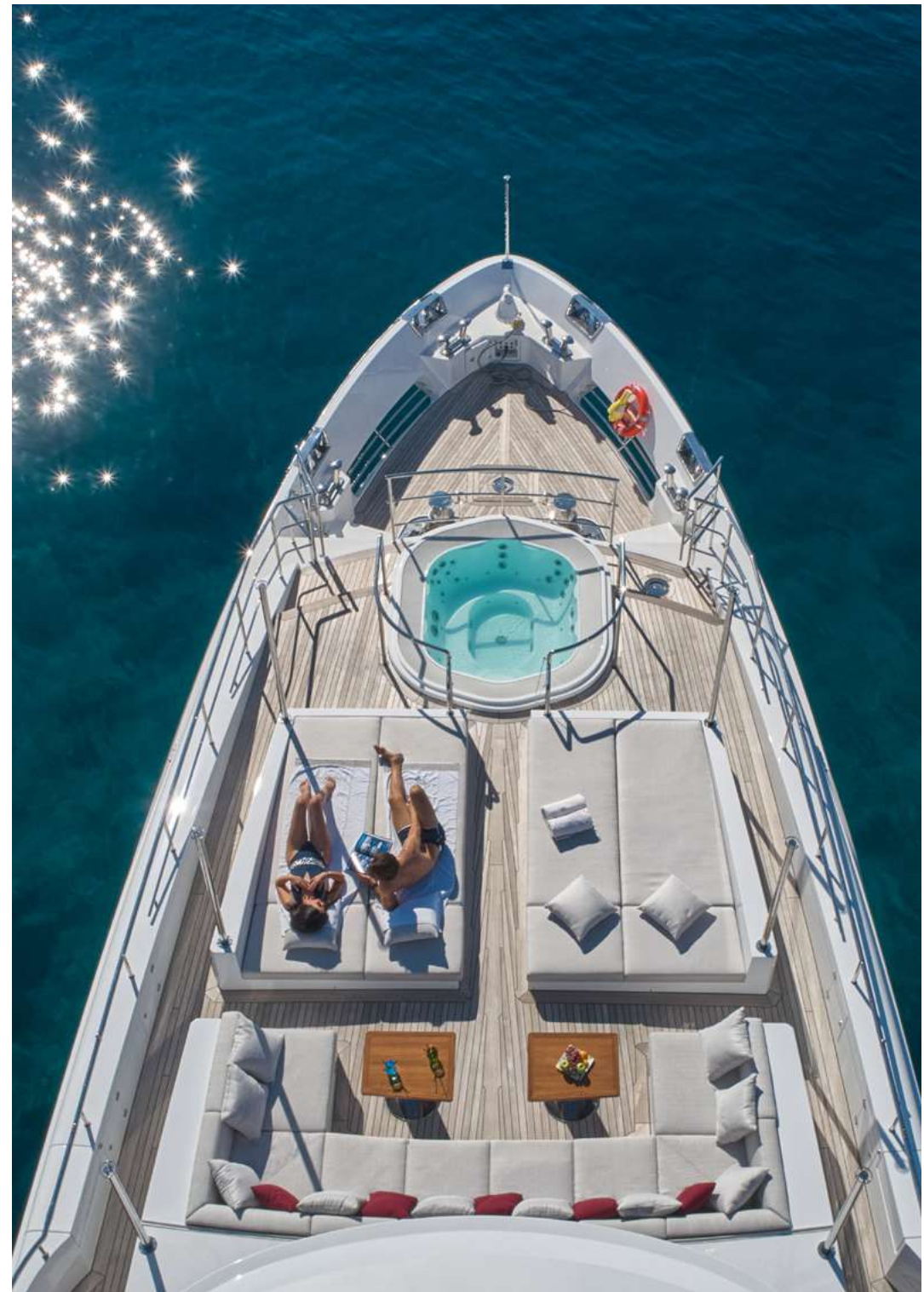
Upper deck. The upper deck is built for fun. In the sky lounge is an onyx bar with 2 proper beer taps and a karaoke machine. This is complemented by a disco setup, featuring laser lights both inside and out and an outside smoke machine. Both young and old, will enjoy the self-levelling pool/billiards table and the football table on the aft deck. For those wanting to unwind, why not enjoy a massage in the dedicated massage room.



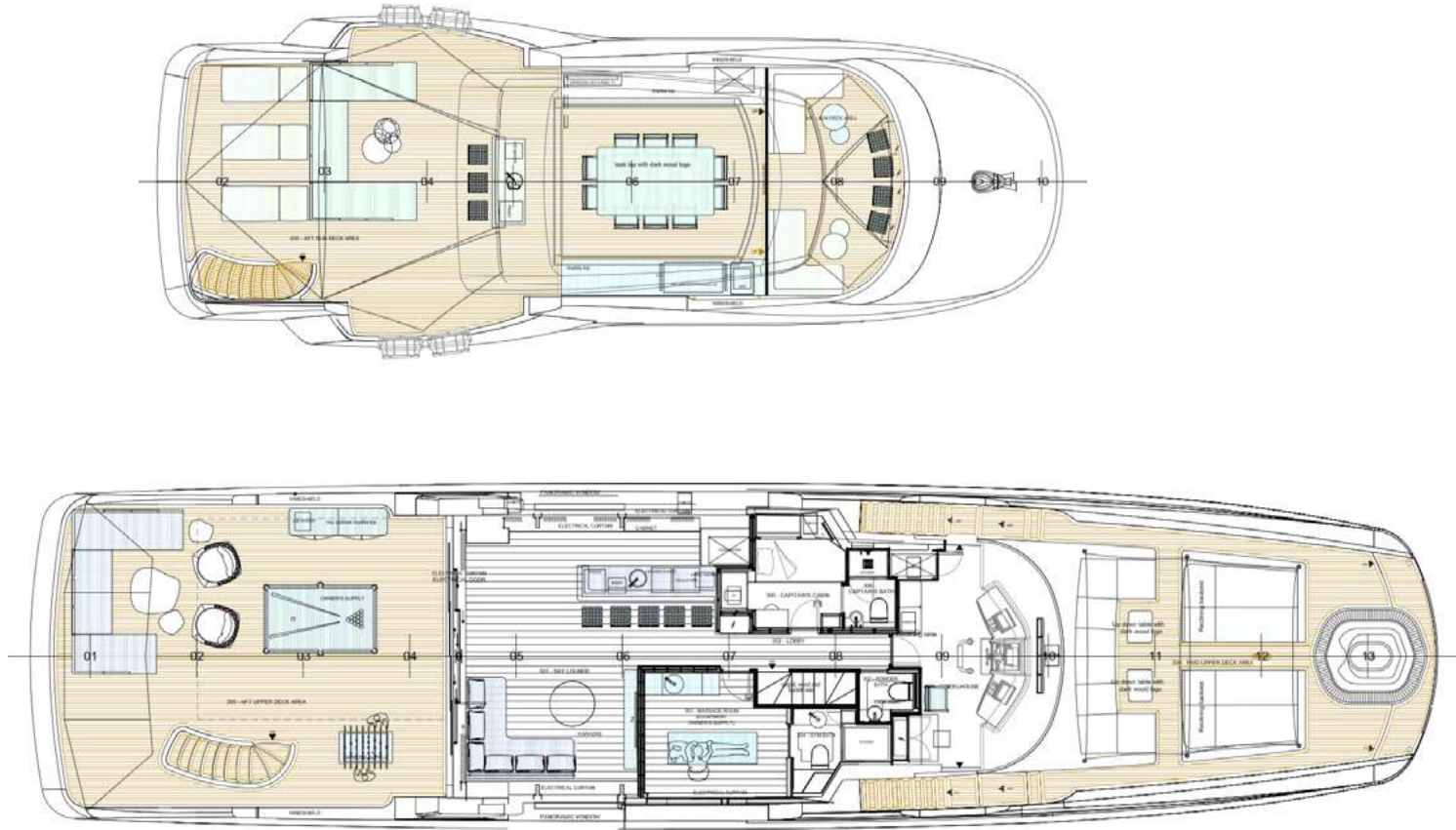
Main deck. On the main deck is the chic main salon, featuring silk artworks created from millions of individual hand stitches. The formal dining table seats 10 and is situated forward in the main salon. On the aft deck is a further table which seats 9 guests and in the entrance way are temperature controlled wine fridges. Moving forward on the main deck is the full beam master suite. This spacious suite includes an office and 2 generous dressing rooms. The bathroom has his and hers heads (with additional bidet) and a large steam shower. The stunning marble floor is also heated. One of the special features of the master suite are the double windows on each side, allowing views of the water and the horizon.

Lower deck. On the lower guest deck a further 8/9 guests can be accommodated in the 2 VIP queen double staterooms, a twin stateroom (with additional pullman berth) and a convertible stateroom (twin or double format for extra flexibility). All have heated marble en suites with showers. Lighting, temperature, TV, music and curtains in all guest areas are controlled with the onboard iPads.

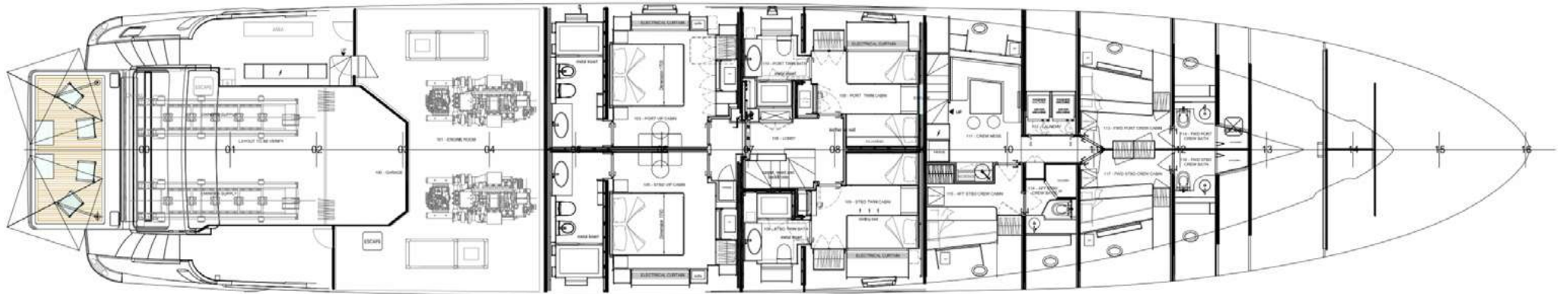
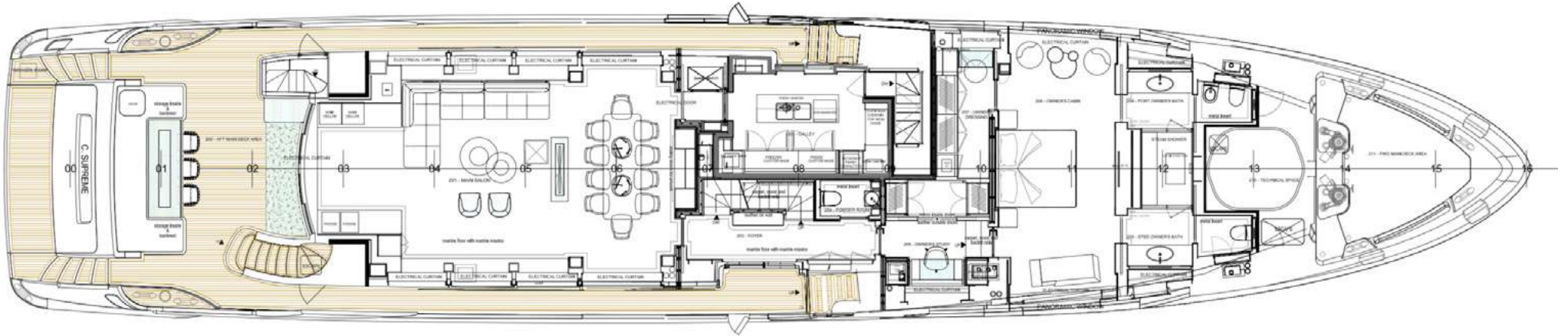
Tenders & Toys. Guests can be whisked off to ports and secluded beaches in the comfortable and fast 12m / 40ft chase boat (with 850 hp) and there is a huge selection of water sports toys onboard to keep all entertained. Getting on and off the tender and toys is made easy with the inflatable docking pontoon and there is a large swim platform with 2 umbrellas and a shower. The experienced charter crew (including a stewardess and deckhand who are also masseuses) will ensure guests have a safe and thoroughly enjoyable charter experience.



GENERAL ARRANGEMENT



GENERAL ARRANGEMENT



ACCOMMODATION

- 11 guests in 5 staterooms
- Magnificent full-beam master stateroom
- 2 x VIP queen double staterooms on the lower deck
- 1 x twin stateroom, with additional pullman berth
- 1 x convertible stateroom or double (can be twin or queen double configuration)

AV EQUIPMENT & DECK FACILITIES

- Satellite TV
- Internet with WiFi (3G/4G where available)
- On-demand movie and music servers
- Apple TV
- Jacuzzi (6 persons) on the foredeck
- Swim platform with 2 x umbrellas and shower
- Massage room
- BBQ on sundeck
- Karaoke system in the sky lounge
- Onyx bar with 2 x beer taps in sky lounge
- Disco with laser lights inside and out and outside smoke machine on the upper deck
- Self-levelling pool/billiards table on the upper deck aft
- Football table on the upper deck aft



TENDERS & TOYS

- 1 x Technohull Explorer 40 tow tender (12.1m / 40ft) with 2 x Yamaha 425 hp engines
- 1 x Seadoo RXP-X 300 sit down jetski (2 person)
- 1 x Seadoo RXT-X 300 sit down jetski (3 person) with module for waterskiing
- 2 x Seabob F5
- Inflatable docking pontoon
- 2 x E-foils (available upon request and at Captain's discretion)
- 2 x Kayaks
- 2 x Windsurfers
- 2 x Standup paddleboards
- Waterskis (selection for adults and children)
- Wakeboard
- Kneeboard
- 2 x Donuts
- 1 x 3-person armchair
- Drone
- Snorkelling equipment
- Fishing equipment
- 4 x hybrid bikes (Specialized Diverge Sport)
- 4 x hybrid e-bikes (Specialized Turbo Creo SL Comp Carbon EVO)

(Bicycles available upon request with sufficient notice prior to the charter)

GYM EQUIPMENT

- 2 x Technogym treadmills
- 2 x Technogym exercise bikes
- Selection of free weights
- Exercise bench
- Yoga mats















IMO 9907160





















