

NIKITA

L U X U R Y C H A R T E R Y A C H T



























































## KEY FEATURES

- New for 2022 and first time on the charter market !
- Aft deck area for al fresco dining
- Beach club with swim platform for enjoying life at the water's edge
- Stylish & elegant interior
- Expert & mindful fantastic Crew of 5!
- Sleek 3-deck yacht with beautiful indoor & outdoor space
- Master suite on the main deck with an en suite and far-reaching views
- Two additional children can be accommodated in the gym, which converts to a fifth cabin with two small singles.

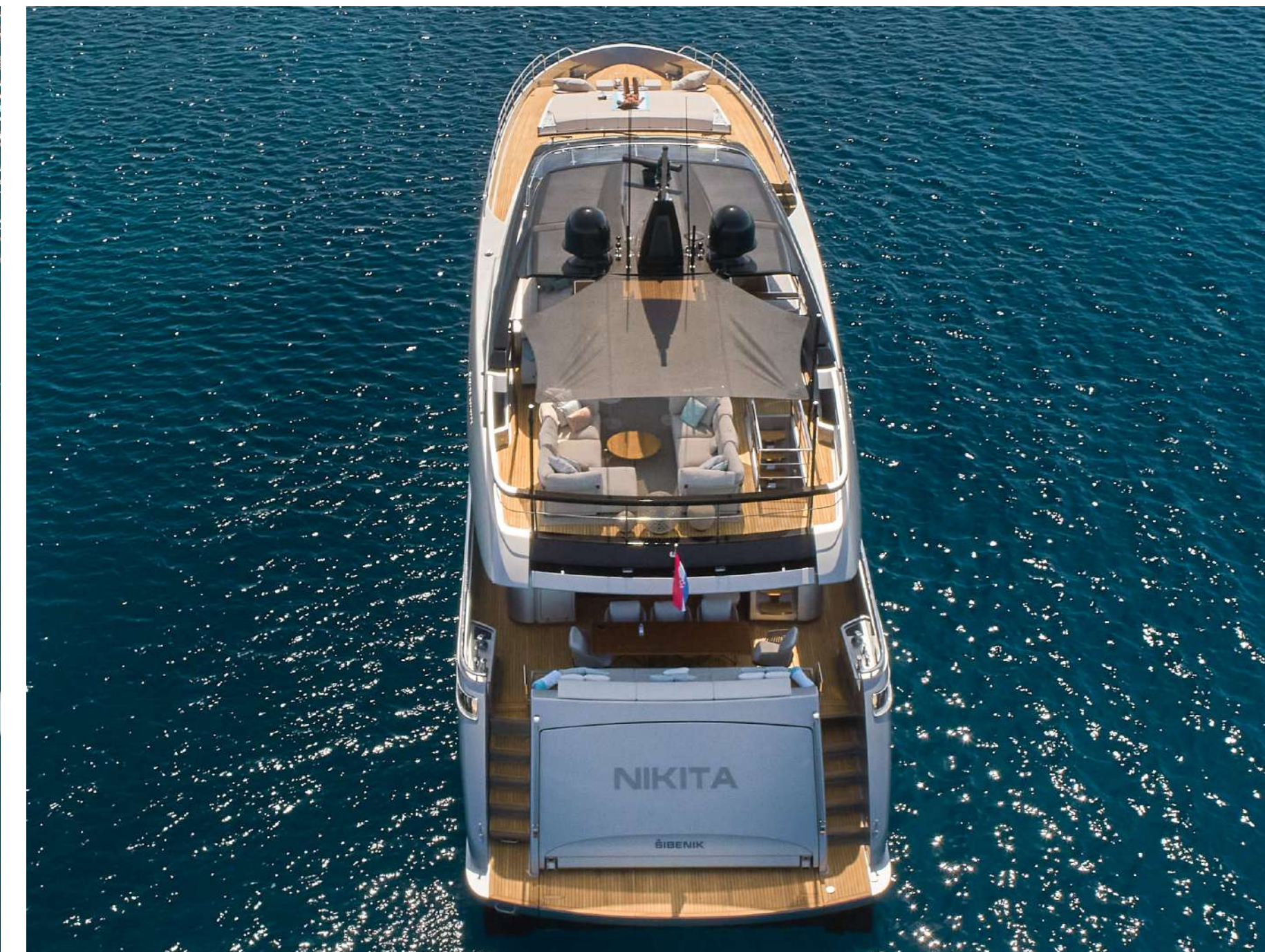
## TENDERS & WATER TOYS

- Sacs Strider 10 (2 x Mercury Verado 350)
- Paddle board
- Snorkeling equipment
- SeaBob F5 RS

## GYM EQUIPMENT

- Weights (from 2,5 kg to 24 kg)
- Kettlebell (from 8 kg to 16 kg)
- Technogym Bench
- Foam Roller
- Loop Bands
- Balance Dome
- Swedish Ladder

**NIKITA**



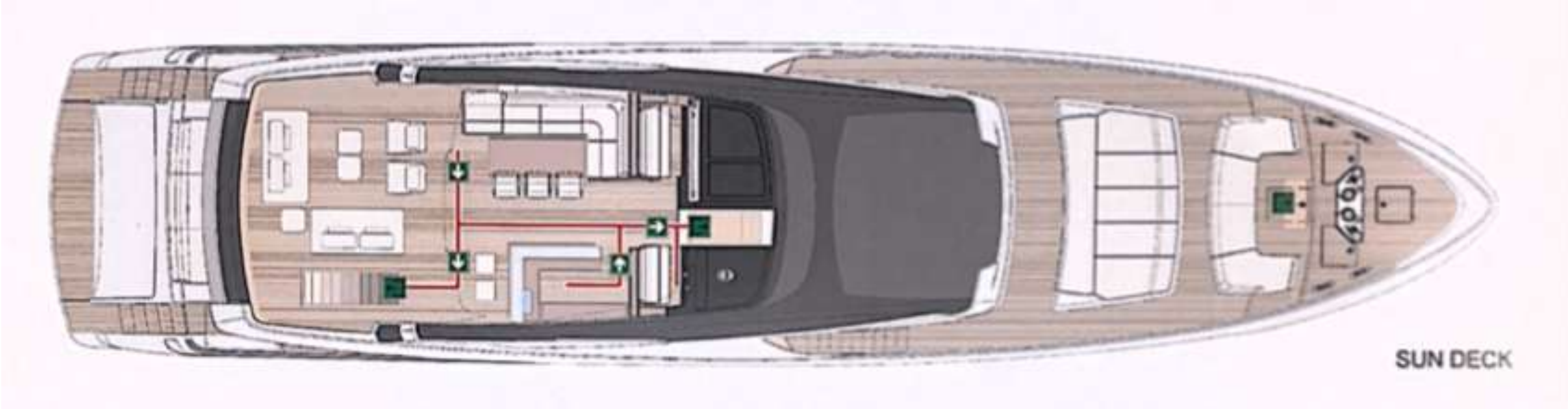


# SPECIFICATIONS

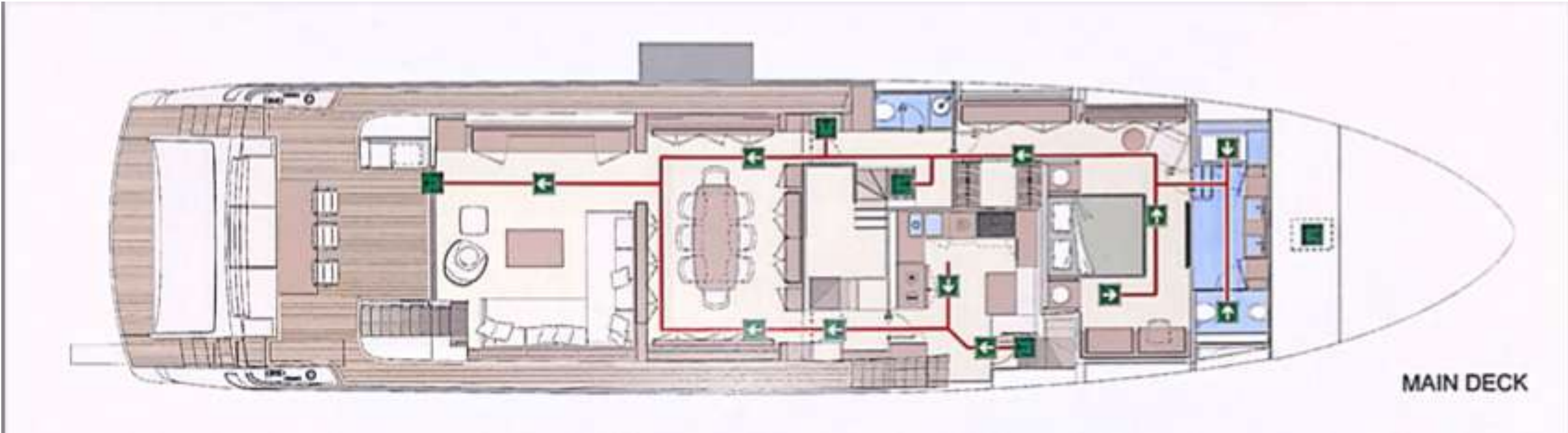
Accommodates	8 Guests in 4 Staterooms
Arrangements	Master Cabin, 2x Double Cabin, Twin Cabin
Length	29.90 (98'1")
Beam	6,70m (22')
Draft	2.26m (7' 5")
Year	2022
Builder	Riva
Interior Designer	Officina Italiana Design
Engines	MTU 16V 2000 M96 MTU 16V 2000 M96L
Cruising Speed	23 knots
Max Speed	26 knots
Fuel consumption	12 kts = 100 l/h (cruising speed ) 28 kts = 1000 l/h (top speed )
Range	300
GRT	TBA



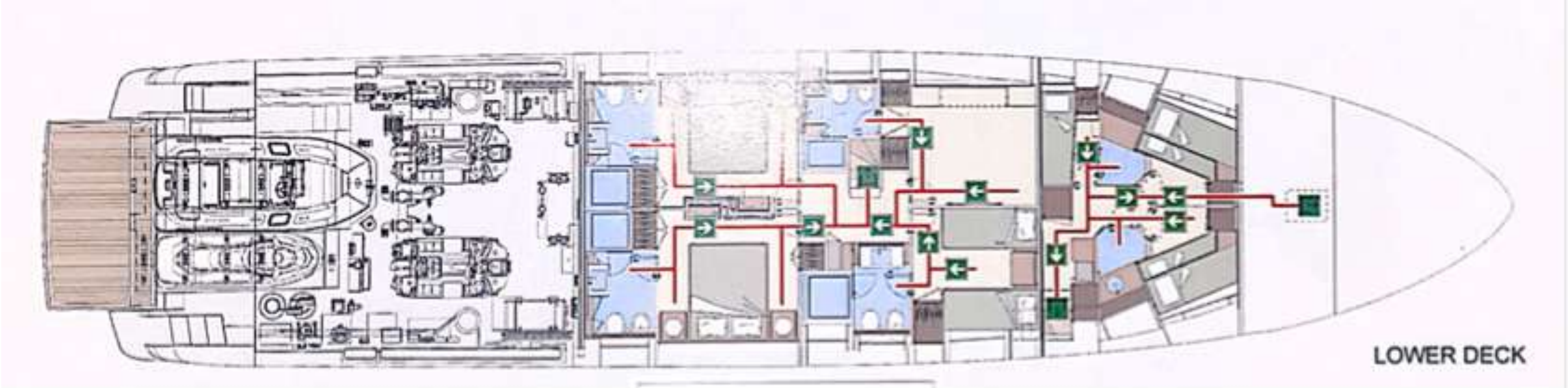














# NIKITA

C O N T A C T   Y O U R   C H A R T E R   B R O K E R